



Weekly Bulletin

W/C 3rd February 2025

Whole School

Moments Matter, Attendance Counts - Our target is for children to attend school every day; a target of 100%. If you view Arbor you will be able to see your child's attendance. If it is below 96% we will start to monitor their attendance.

Please remember holiday requests will be unauthorised and penalty notices will be issued. Please refer to our new Attendance Policy on the school website which includes the new government rules.

Overall attendance for this week is: **96.6%**

FG	FT	1G	1T	2G	2T	3G	3T	4G	4T	5G	5T	6G	6GO	6T
94.2%	87.1%	97.5%	98.4%	96.7%	97.4%	98.8%	96.6%	99.2%	94.6%	96%	98.8%	99.4%	97.5%	98.1%

Absences - Please remember that all absences **MUST** be reported to the school **each day** unless otherwise agreed. Absences can be reported preferably by the Arbor portal or via the absence line or an email. This is part of our absence and safeguarding policies. Home visits will take place if we have not had any communication from parents. Please also ensure that Arbor contains at least 2 emergency numbers for your child.

PJ Parties Friday 7th February

EYFS 3pm-3:30/3:40pm (with parents)

Years 1&2 - 3:50pm (4pm start)-5:30pm

Years 3,4,5&6 - 5:50pm (6pm start)-7:30pm

Please book via the link below:

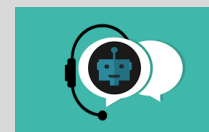
<https://friends-association-of-great-chart.sumupstore.com/product/pyjama-party-2025-great-chart-pupils-only>



Booking closes Tuesday 4th February at 6pm

When booking please scroll to the bottom of the payment screen, in the 'note to merchant' section add your child's name, year group and any allergies.

Tuesday 11th February 8pm - Online Safety Talk to parents - As a response to our survey and parents asking for more support to help them keep their child safe online please join Miss Adams and Mr Manek for an online safety talk. Please note this will be an online session (NOT face to face at the school). Sign up via Arbor - refer to the email sent previously for details.



Clubs Reminder -

Reading Club cancelled on 4th February.

No Gymnastics on Friday 7th February.



Our suave (sophisticated) word of the week is: Plead

Does your child understand the meaning of this word? Can they use this word in a sentence? Can they spell the suave word? How many times can they use the word throughout the week in their speech or writing?



Kent Teacher of the Year 2025

We're excited to invite you to [nominate someone for a Kent Teacher of the Year Award](#). From the dedicated teaching staff who inspire and educate, to the support staff who keep everything running smoothly, we recognise the hard work and dedication of each and every person who contributes to our schools.

Stop Think Choose - To help ease the pressure on the medical services the NHS is encouraging parents to seek the right support at the right time and ensuring parents have what is necessary to try and treat their child at home.



<https://www.stopthinkchoose.co.uk/>

[https://www.kmhealthandcare.uk/application/files/7917/0913/6363/NHS toolkit for primary school children.pdf](https://www.kmhealthandcare.uk/application/files/7917/0913/6363/NHS_toolkit_for_primary_school_children.pdf)



If you'd like to keep up to date with the **Friends' Association** please feel free to follow them on their various social media groups:

<https://www.facebook.com/FriendsofGreatChartPrimarySchool>

<https://www.instagram.com/friendsofgreatchartprimary>

Pre loved uniform <https://www.facebook.com/greatchartpreowneduniform> or the next sale will be on **Thursday 24th April**

Next Friends' Association Meeting: Tuesday 11th February 7pm

Adult Education Session at the school - Family First Aid -

19th March 9:30-11:30 (adults only)



Join our essential course designed to equip parents with life-saving skills in managing incidents involving illness or injury. Learn how to provide care and support until medical help arrives. This course ensures readiness and confidence in handling emergency situations. Please sign up via ARBOR from the **17th Feb 9am**. Places will be limited.



Severe Weather

During the winter months we are likely to experience severe weather where there may be the possibility that the school would need to remain closed, partially open, open later than normal or close earlier. We would endeavour to make decisions as early as possible and inform parents of this decision via the following ways:

- * Announcement via the school website
- * Email
- * Text message
- * Class Dojo announcement
- * Kent Closures website (www.kentclosures.co.uk). Parents will need to simply register for alerts.



Ashford Libraries Winter Mini Challenge- Simply encourage children from ages 4 to 11 to read at least three books of their choice between **1st December 2024** until the **20th February 2025** and add them to their online profile at wintermini.org.uk. Reaching their reading goal will unlock a limited-edition digital badge and a new Winter Mini Challenge certificate to print off and keep.



EYFS

EYFS PJ Party 3pm - 7th February - Children are to bring their PJs to school to change into. Staff will bring the children to the gate to be collected by an adult. Please queue at the large hall door. An adult **must** attend this session with the child.

Year 1

Year 2

Year 3

Tuesday 4th February - 3G Swimming.

Thursday 6th February - Forest School. Please could the children make sure they have appropriate footwear and clothing for their forest school session.

Friday 14th February 3:15-3:45pm - Classroom Open Session

Parents are invited to come to the classroom and see the childrens' work.

Tuesday 25th February - 3 Toke swimming payment deadline. Please see the original email for full details.

Year 4

Friday 7th February 3:15-3:45pm - Classroom Open Session

Parents are invited to come to the classroom and see the childrens' work.

Year 5

Year 6

28th February - Please be reminded of the **payment deadline** for Year 6 residential

Friday 31st January 3:15-3:45pm - Classroom Open Session

Parents are invited to come to the classroom and see the childrens' work.

Goldwell

Win a Year of Adventures with the next SUPERDRAW!

Play our lottery this month and you could win a Year of Adventures (or £1,000 cash alternative, of course!) - an annual family membership for English Heritage, the National Trust, and a Merlin Pass too!

Get your tickets before Saturday 22nd February for your chance to win!

Plus a local winner EVERY SATURDAY.

£1 per ticket. For every ticket you play, 74.2% goes to our school.

<https://www.yourschoollottery.co.uk/lottery/school/great-chart-primary-school>



We would like to thank our winner from last Saturday's draw who gifted their generous winnings to the school!

You know who you are grateful.

are and we are

THANK YOU

