



## Weekly Bulletin

W/C 7th January 2025

First Day of Term - Tuesday 7th January

Goldwell return to school on **Monday 6th January 2025**

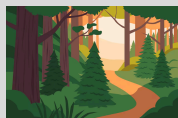
### Whole School

**Moments Matter, Attendance Counts** - Our target is for children to attend school every day; a target of 100%. If you view Arbor you will be able to see your child's attendance. If it is below 96% we will start to monitor their attendance.

Please remember holiday requests will be unauthorised and penalty notices will be issued. Please refer to our new Attendance Policy on the school website which includes the new government rules.

Overall attendance for this week is: **91%**

FG	FT	1G	1T	2G	2T	3G	3T	4G	4T	5G	5T	6G	6GO	6T
91.2%	84.9%	97.9%	89.2%	98.7%	95.3%	92.1%	90.8%	99.1%	97.4%	93.5%	83.5%	86.9%	82.5%	81.9%



Great Chart and Singleton Parish Council have created a tree trail that details some of the great trees we have in the local area. The guidance and map are attached. The trail is around 3 km and a great way to explore the local area.



### Kent Teacher of the Year 2025

We're excited to invite you to [nominate someone for a Kent Teacher of the Year Award](#). From the dedicated teaching staff who inspire and educate, to the support staff who keep everything running smoothly, we recognise the hard work and dedication of each and every person who contributes to our schools.



If you'd like to keep up to date with the **Friends' Association** please feel free to follow them on their various social media groups:

<https://www.facebook.com/FriendsofGreatChartPrimarySchool>

<https://www.instagram.com/friendsofgreatchartprimary>

**Pre loved uniform** <https://www.facebook.com/greatchartpreowneduniform> 16th January- Pre loved Uniform Sale in the Large hall- more information to follow.



### Friday 10th January - Parent Session with Mrs Ostridge, Family Liaison Officer

Come and join her for a Coffee and Chat when you drop your children off in the Community Room. Pre-schoolers are welcome and refreshments will be on offer.

### Club Start Dates for Term 3:

**Irish Dancing** - Tuesday 7th January

**Morning Yoga, Natalie's Stars, TSS (KS2)** - Wednesday 8th January

**Gymnastics (Thurs session), ESCYT Drama** - Thursday 9th January

**Gymnastics (Fri session)** - Friday 10th January

**TSS (KS1)** - Monday 13th January

**Karate** - Friday 17th January



## Severe Weather

During the winter months we are likely to experience severe weather where there may be the possibility that the school would need to remain closed, partially open, open later than normal or close earlier. We would endeavour to make decisions as early as possible and inform parents of this decision via the following ways:

- \* Announcement via the school website
- \* Email
- \* Text message
- \* Class Dojo announcement
- \* Kent Closures website ([www.kentclosures.co.uk](http://www.kentclosures.co.uk)). Parents will need to simply register for alerts.

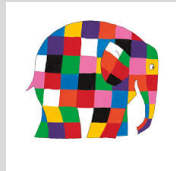


**Ashford Libraries Winter Mini Challenge-** Simply encourage children from ages 4 to 11 to read at least three books of their choice between **1st December 2024** until the **20th February 2025** and add them to their online profile at [wintermini.org.uk](http://wintermini.org.uk). Reaching their reading goal will unlock a limited-edition digital badge and a new Winter Mini Challenge certificate to print off and keep.



## EYFS

**Thursday 9th January - Forest School.** Please ensure your children bring in a change of warm clothes/shoes as we go out in all weathers.



**For Parents & Children in EYFS & Yr 1 - Elmer Workshop** (run by Kent Adult Education) - **9th January 2025 3:15-5:15pm.** Families will need to bring a plastic milk bottle with them (one per child) to the workshop. **No more spaces available**

### IMPORTANT TO ACTION

**Monday 13th January** - We will be starting PE. Please order your child's PE t-shirt asap, ready for January.

The school office has a small stock of PE tops in these colours and sizes: **Red 3-4, Blue 3-4, Yellow 3-4 (no Green and no other sizes available).**

For any other sizes, please order online from our uniform supplier via the [school's website](#)

You will find your child's House on their Arbor account. **Bodiam - Red, Dover - Blue, Hever - Yellow, Leeds - Green.**

**Your child will need the following in a named PE bag:**

Plimsolls or trainers & socks & dark navy or black shorts & Great Chart logo coloured t-shirt as per house colours

All PE kits need to be named and brought into school by Monday 13th January. PE kit will remain in school and will be sent home at the end of term.

## Year 1



**For Parents & Children in EYFS & Yr 1 - Elmer Workshop** (run by Kent Adult Education) - **9th January 2025 3:15-5:15pm.** Families will need to bring a plastic milk bottle with them (one per child) to the workshop. **No more spaces available**

**Friday 31st January 3:15-3:45pm - Classroom Open Session**

Parents are invited to come to the classroom and see the childrens' work.

## Year 2

## Year 3

**Tuesday 7th January - 3G Swimming Lessons start.** Please see the letter attached for full details.

**Friday 14th February 3:15-3:45pm - Classroom Open Session**

Parents are invited to come to the classroom and see the childrens' work.

#### Year 4

**Friday 7th February 3:15-3:45pm - Classroom Open Session**

Parents are invited to come to the classroom and see the childrens' work.

#### Year 5

#### Year 6

**Friday 31st January 3:15-3:45pm - Classroom Open Session**

Parents are invited to come to the classroom and see the childrens' work.

#### Goldwell

Please bring packed lunch as there are no hot dinners on Monday 6th January.

**Thank you for all of your support. Wishing you a very Merry Christmas and a Happy New Year.**

**Christmas Super Draw THIS SATURDAY!**  
**WIN £3000 CHRISTMAS CASH BONUS**  
**LAST CHANCE TO PLAY**

**£1 per ticket. For every ticket you play, 74.2% goes to our school.**

<https://www.yourschoollottery.co.uk/lottery/school/great-chart-primary-school>

**Please support the school, we have a local winner every Saturday!**

