



## Weekly Bulletin

W/C 14th July 2025

**TERM 1 STARTS WEDNESDAY 3RD SEPTEMBER**

### Whole School

**Moments Matter, Attendance Counts** - Our target is for children to attend school every day; a target of 100%. If you view Arbor you will be able to see your child's attendance. If it is below 96% we will start to monitor their attendance.

Please remember holiday requests will be unauthorised and penalty notices will be issued. Please refer to our new Attendance Policy on the school website which includes the new government rules.

Overall attendance for this week is: **97.6%**

FG	FT	1G	1T	2G	2T	3G	3T	4G	4T	5G	5T	6G	6GO	6T
96.7%	97.1%	98.3%	98.4%	93.8%	100%	97.9%	100%	99.6%	97.9%	94.8%	95.6%	98.7%	100%	96.3%

**Absences** - Please remember that all absences MUST be reported to the school each day unless otherwise agreed. Absences can be reported preferably by the Arbor portal or via the absence line or an email. This is part of our absence and safeguarding policies. Home visits will take place if we have not had any communication from parents. Please also ensure that Arbor contains at least 2 emergency numbers for your child.

### Club End Dates:

Natalie's Stars - Wed 16th July

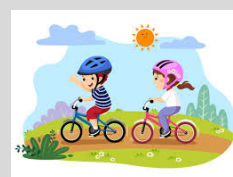
Gymnastics & ESCYT Drama - Thurs 17th July

**Wednesday 16th July \*\*Please note the office will be closing promptly at 3:15pm for a staff meeting\*\***

### Dr Bike and Afterschool ride with Cycle Circle - Weds 16th July

Dr Bike will be in the car park offering free bike checks and minor repairs. These need to be pre-booked with Cycle Circle in advance.

There will then be a free after school bike ride for KS2 children and their parents from 4:15-5:30pm.



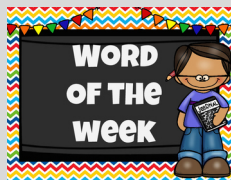
**Friday 18th July - Early Closure - see your year group for the timings (not for Goldwell pupils).**

Afterschool club will be closed but for those who usually attend please speak to your child's teacher and they will be able to remain in school until 3pm or 3:10pm.

### Summer Reading Challenge

Make sure your child continues their reading over the holiday with this exciting reading challenge! We are hoping as many children as possible take part this year - it is a great way to help children continue reading through the summer holidays. They can read anything they choose from books to comics - and include audio and E-books if they would like. All they need is a Kent Libraries library card and pop into a library or go online to join the challenge - see attached leaflet.





Our suave (sophisticated) word of the week is: **astound**

Does your child understand the meaning of this word? Can they use this word in a sentence? Can they spell the suave word? How many times can they use the word throughout the week in their speech or writing?



If you'd like to keep up to date with the **Friends' Association** please feel free to follow them on their various social media groups:

<https://www.facebook.com/FriendsofGreatChartPrimarySchool>

<https://www.instagram.com/friendsofgreatchartprimary>

**Next Friends' Association Meeting: Tuesday 23rd September**

**Friends' Association Survey 2025**

The Friends' Association have once again been working really hard over the year to support the staff and pupils of Great Chart Primary School. They would welcome your feedback to help them review their plans for next year.

Many thanks for your time. [Feedback form](#)

### Strategies to support your child with English 10th September 2025 10am-11am

Kent Adult Education will be running a really useful course for parents to help support their child with English. This one hour course is designed for parents who wish to enhance their children's literacy skills during the critical primary school years. The course provides practical strategies, tools, and activities that can be used at home to support and strengthen children's understanding of literacy including writing, speaking and listening and reading.

Booking for this course **opens on 14th July**. Please use this [link](#).

#### EYFS

**Early Closure** - Friday 18th July - please collect your child at **1:20pm**

#### Year 1

**Early Closure** - Friday 18th July - please collect your child at **1:30pm**

#### Year 2

**Early Closure** - Friday 18th July - please collect your child at **1:25pm**

#### Year 3

**Thursday 17th July - 3 Griffin have a class treat - a trip to the park!** Children are invited to bring a snack and a drink.

**Early Closure** - Friday 18th July - please collect your child at **1:25pm**

#### Year 4

**Early Closure** - Friday 18th July- School - please collect your child at **1:30pm**

#### Year 5

**Thursday 17th July - Swimming 5T.** Please ensure your child has their swim kit and comes to school in PE Kit.

**Early Closure** - Friday 18th July - please collect your child at **1:30pm**

#### Year 6

**Friday 19th July - Leavers' Service - 9:15am.** Parents are to arrive at 9am. Children will leave with their parents after this special service.

## Goldwell

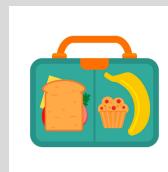
**Thursday 14th & 15th July - Bikeability.** We will change into P.E kits. Don't forget your bikes and cycle helmets if you have them (some of us might prefer to bring our own helmet, even if you're using our bikes).

**Wednesday 16th July - Riding.** Please can all children come into school in jogging bottoms and trainers and have their uniform in their bag to change back into when they arrive back at school.

**Friday 18th July - Leavers' Service 9.15am for Year 6 ONLY!** Parents are to arrive at 9am.

**PACKED LUNCH REQUIRED - Monday 21st and Tuesday 22nd July**

The school kitchen is closed, so please can all children have packed lunches for both days.



**Monday 21st July** - Goldwell class to visit the Wyvern Festival. Children will be taken to Wyvern - meet parents there (Please see letter for more details). Children will be taken back to Goldwell by minibus and can be collected at 3pm.

**Tuesday 22nd July** - Please can children have a spare pair of clothes or PE kits in their bags. Children should be picked up from school at 1pm.

## Enter Our SuperDraw - Win a £1000 Sainsbury's Voucher!

Play our lottery this month and you could win a £1000 Sainsbury's Voucher (or £1,000 cash alternative)  
Get your tickets before Saturday 26th July for your chance to win!

**Plus a local winner EVERY SATURDAY.**

**£1 per ticket. For every ticket you play, 74.2% goes to our school.**

<https://www.yourschoollottery.co.uk/lottery/school/great-chart-primary-school>

