

Weekly Bulletin

W/C 10th February 2025

LAST DAY OF TERM - 14TH FEBRUARY. TERM 4 STARTS MONDAY 24TH FEBRUARY.

Whole School

Moments Matter, Attendance Counts - Our target is for children to attend school every day; a target of 100%. If you view Arbor you will be able to see your child's attendance. If it is below 96% we will start to monitor their attendance.

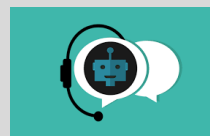
Please remember holiday requests will be unauthorised and penalty notices will be issued. Please refer to our new Attendance Policy on the school website which includes the new government rules.

Overall attendance for this week is: **94.8%**

FG	FT	1G	1T	2G	2T	3G	3T	4G	4T	5G	5T	6G	6GO	6T
91.1%	85.7%	98.3%	91.4%	95.8%	97.7%	95.6%	94.3%	98.9%	98.3%	92.7%	96.2%	92.1%	97.5%	97.5%

Absences - Please remember that all absences **MUST** be reported to the school each day unless otherwise agreed. Absences can be reported preferably by the Arbor portal or via the absence line or an email. This is part of our absence and safeguarding policies. Home visits will take place if we have not had any communication from parents. Please also ensure that Arbor contains at least 2 emergency numbers for your child.

Tuesday 11th February 8pm - Online Safety Talk to parents - As a response to our survey and parents asking for more support to help them keep their child safe online please join Miss Adams and Mr Manek for an online safety talk. Please note this will be an online session (NOT face to face at the school). Sign up via Arbor - refer to the email sent previously for details.



Ofsted is aiming to introduce the new report card system from September 2025. Please could I urge everyone to read this document and then to complete the consultation to add your views.

<https://www.gov.uk/government/consultations/improving-the-way-ofsted-inspects-education>

Club Finishing Dates:

Monday 10th Feb - TSS (KS1), Board Games

Tuesday 11th Feb - Irish Dancing, Beginners Recorder Club, Netball, Chess Club and Reading Club.

Wednesday 12th Feb - Natalie's Stars, TSS (KS2), Girls Football

Thursday 13th Feb - Gymnastics (Thurs session)

Friday 14th Feb - Gymnastics (Fri session)



Lost property. The lost property table will be outside reception from Monday 10th - Friday 14th February. Please take a look if your child has lost something. Any items that are left over will be disposed of.



Our suave (sophisticated) word of the week is: taunt

Does your child understand the meaning of this word? Can they use this word in a sentence? Can they spell the suave word? How many times can they use the word throughout the week in their speech or writing?



Kent Teacher of the Year 2025

We're excited to invite you to [nominate someone for a Kent Teacher of the Year Award](#). From the dedicated teaching staff who inspire and educate, to the support staff who keep everything running smoothly, we recognise the hard work and dedication of each and every person who contributes to our schools.



Stop Think Choose - To help ease the pressure on the medical services the NHS is encouraging parents to seek the right support at the right time and ensuring parents have what is necessary to try and treat their child at home.



<https://www.stopthinkchoose.co.uk/>

[https://www.kmhealthandcare.uk/application/files/7917/0913/6363/NHS toolkit for primary school children.pdf](https://www.kmhealthandcare.uk/application/files/7917/0913/6363/NHS_toolkit_for_primary_school_children.pdf)



If you'd like to keep up to date with the **Friends' Association** please feel free to follow them on their various social media groups:

<https://www.facebook.com/FriendsofGreatChartPrimarySchool>

<https://www.instagram.com/friendsofgreatchartprimary>

Pre loved uniform <https://www.facebook.com/greatchartpreowneduniform> or the next sale will be on **Thursday 24th April**

Next Friends' Association Meeting: Tuesday 11th February 7pm

Adult Education Session at the school - Family First Aid -

19th March 9:30-11:30 (adults only)



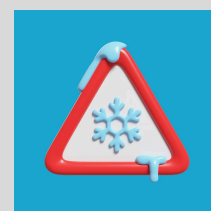
Join our essential course designed to equip parents with life-saving skills in managing incidents involving illness or injury. Learn how to provide care and support until medical help arrives. This course ensures readiness and confidence in handling emergency situations. Please sign up via ARBOR from the **17th Feb 9am**. Places will be limited.



Severe Weather

During the winter months we are likely to experience severe weather where there may be the possibility that the school would need to remain closed, partially open, open later than normal or close earlier. We would endeavour to make decisions as early as possible and inform parents of this decision via the following ways:

- * Announcement via the school website
- * Email
- * Text message
- * Class Dojo announcement
- * Kent Closures website (www.kentclosures.co.uk). Parents will need to simply register for alerts.



Ashford Libraries Winter Mini Challenge- Simply encourage children from ages 4 to 11 to read at least three books of their choice between **1st December 2024** until the **20th February 2025** and add them to their online profile at wintermini.org.uk. Reaching their reading goal will unlock a limited-edition digital badge and a new Winter Mini Challenge certificate to print off and keep.

THE READING AGENCY Winter Mini Challenge

Marvellous Makers

EYFS

Thursday 13th of February - we will be having a Superhero day to finish off our topic for this term. Your child can come to school dressed as their favorite Superhero. Please can we ask that there are no props or masks on the day. If it is cold they will need a layer under their costume.



Friday 14th February - Your child will need a photo of their house by the 14th February at the latest. Please can you email the school office receptionist@great-chart.kent.sch.uk a photo of the front of your house (**the whole house, not just the front door**) and put it to the attention of your class teacher or print a small photo and put it in your child's home learning book.

Year 1

Year 2

Year 3

Tuesday 11th February - 3G Swimming - last session.

Friday 14th February 3:15-3:45pm - Classroom Open Session

Parents are invited to come to the classroom and see the childrens' work.

Tuesday 25th February - 3 Toke swimming payment deadline. Please see the original email for full details.

Year 4

Educational Visit to Folkestone in April 2025 - please look out for the letter sent earlier today.

Year 5

Year 6

Wednesday 26th February 6pm - KS2 SATs Talk to Y6 parents and Y6 pupils only - large hall - Please come to our KS2 SATS talk to find out a little more about the process and to take part in Mrs Carter's SATs quiz! Please could we kindly ask that all Y6 children sit with their parents and leave their mobile phones at home. Thank you

28th February - Please be reminded of the **payment deadline** for Year 6 residential

Goldwell

Win a Year of Adventures with the next SUPERDRAW!

Play our lottery this month and you could win a Year of Adventures (or £1,000 cash alternative, of course!) - an annual family membership for English Heritage, the National Trust, and a Merlin Pass too!

Get your tickets before Saturday 22nd February for your chance to win!

Plus a local winner EVERY SATURDAY.

£1 per ticket. For every ticket you play, 74.2% goes to our school.

<https://www.yourschoollottery.co.uk/lottery/school/great-chart-primary-school>

